



► **TELECAMERA DI RILEVAMENTO INCENDIO-PERSONE-OGGETTI**

**Telecamera con Rilevamento Termico**

*Caratteristiche Tecniche:*

- Rilevamento temperatura corpo umano e oggetti
- Controllo Incendio e temperature
- Protezione aree altamente a rischio Incendio
- Rilevamento temperatura di oggetti e superfici
- Detector FPA Microbolometer
- Array size Format 160 x 120
- Identificazione temperature elevate
- Rilevamento di fumo
- Rilevamento della distanza
- Rilevamento su più persone di temperature anormali
- Sensibilità Termica da 0,08C° a 30C°



CDV-TT2



Semplice da usare



Installazione Batteria

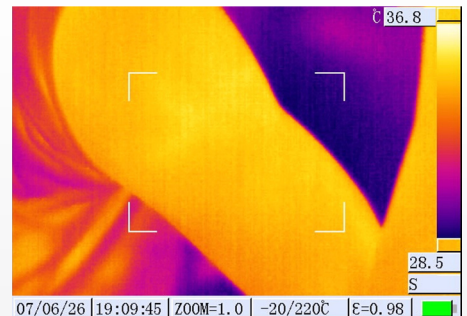
► **CAMPI DI APPLICAZIONE DELLE TELECAMERE TERMICHE**



Temperatura Corpo Umano

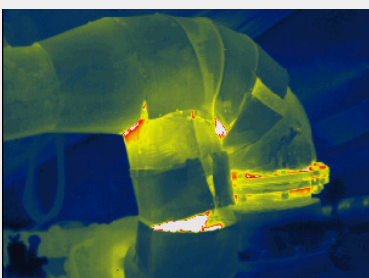


Temperatura Corpo Umano  
Rilevamento su più persone

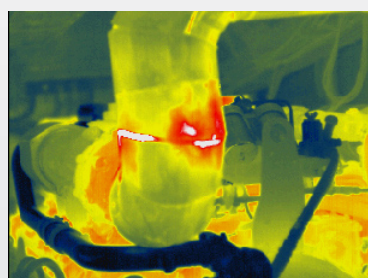


Temperatura Corpo Umano

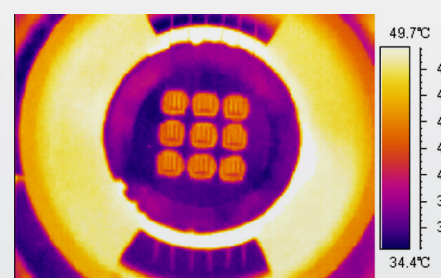
- Ideale per controllo aree con flussi di persone : Aeroporti, Centri Commerciali, Stazioni Treni e Autobus**
- Permette di controllare un numero elevato di persone senza interferire nel normale flusso**
- Rileva a distanza le temperature evitando eventuali infezioni di contatto con l'operatore**
- Le anomalie vengono visualizzate con segnalazione luminosa, sonora, persona e temperatura rilevata.**



Rilevamento Temperatura Tubo



Rilevamento Temperatura Tubo



Rilevamento Temperatura Cavo


 Uffici  
Banche


Industria


 Edifici  
Pubblici


Condomini



Residenziali

## Telecamera Termica TT2

ITEM	TT2	TT2-P
Detector type	Uncooled FPA microbolometer	
Array size/format	160×120	
Field of view / min focus distance	12° × 9°/0.3m	
Spatial resolution (IFOV)	1.3 mrad	
Thermal sensitivity	0.12 °C @30 °C	
Frame rate	50HZ	50/60HZ
Focus	Manual	
Electronic zoom	N/A	2X
Spectral range	8~14µm	
LCD	Built-in high-resolution color 2.5" LCD	
Temperature ranges	-20 °C ~ +180 °C	-20 °C ~ +180 °C
Accuracy	±2 °C or ±2% of reading, whichever is greater	
Measurement correction	Automatic/manual	
Measurement mode	Movable spots, Movable areas (max, min, and average temperatures), Isothem. Alarm (voice, color)	Up to 4 movable spots, Up to 3 movable areas (max, min and average temperatures), Line profile, Isothem. Temperature difference, Alarm (voice, color)
Color palette	3	11
Image adjustment	Auto/manual gain and brightness	
Setup functions	Date/time, temperature unit, language	
Emissivity correction	Variable from 00.1 to 1.0 or select from listings in pre-defined material list	
Ambient temperature correction	Automatic correction according to user input	
Atmospheric transmission correction	N/A	Automatic correction according to user input object distance, relative humidity, ambient temperature
Storage Card	Built-in flash memory, Up to 100 images	Built-in flash memory, up to 2000 images
Storage mode	Manual single image saving	Automatic/manual single image saving
File format-thermal	JPEG, 14 bit thermal image with measurement data	
Voice annotation	N/A	Input via built-in microphone. Up to 40 seconds of digital voice per image stored with image
Laser pointer	Class 2, 1mw/635nm (red)	
Battery type	Li-Ion, re-chargeable	
Battery operating time	3 hours continuous operation	
Charging system	Intelligent charger	Intelligent charger or power supply adaptor (optional) on the charge
Power saving	YES	
External power	N/A	10~15V DC
Operating temperature	-15 °C ~ +50 °C	
Humidity	70% non-condensing	
Encapsulation	IP54	
Weight	0.6Kg	
Dimensions	250mm×100mm×72mm	
External DC Input	N/A	Yes
Audio output	N/A	Yes
Video output	N/A	PAL/NTSC
USB	Image, measurement data to PC	Image, measurement data and voice transfer to PC